



ASSAM

Volume - 2

General Knowledge of Assam & General English



INDEX

S No.	Chapter Title	Page No.
1	Assam at a glance	1
2	Geographical overview of Assam	3
3	Minerals and Power Resource in Assam	8
4	Protected Areas in Assam	11
5	Vegetation and Forest of Assam	14
6	Agriculture in Assam	16
7	Industries in Assam	19
8	Population and Census of Assam	22
9	Ancient History of Assam	25
10	Medieval History of Assam	31
11	Modern History of Assam	38
12	Post Independence History of Assam	45
13	Art & Culture of Assam	48
14	Famous Personalities	52
15	Tourism	54
16	Governor	56
17	Chief Minister	58
18	Legislative Assembly	60
19	Administrative Division of Assam	63
20	Special Provisions and Unique Features of Assam	65
21	Constitutional Bodies	66
22	Non-constitutional Bodies	70
23	High Court	73

INDEX

S No.	Chapter Title	Page No.
24	Municipality	75
25	Panchayat	77
26	Economy	79
27	Social Sector	81
28	Assam Government Schemes & Initiatives	83
29	Transport and Communication	86
30	Noun	89
31	Pronoun	97
32	Adjective	102
33	Adverbs	108
34	Verbs	114
35	Conjunction	122
36	Preposition	127
37	Articles	132
38	Tense	136
39	Subject Verb Agreement	142
40	Voices	146
41	Narration	152
42	Antonyms & Synonyms	159
43	One Word Substitution	171
44	Idioms with their meaning and uses in sentence	178
45	Phrasal Verb	189
46	Sentence Improvements	194

INDEX

S No.	Chapter Title	Page No.
47	Spotting Error	200
48	Conditional Sentences	209
49	Non – Finite Verbs	212

1

CHAPTER

Assam at a Glance



Assam at a Glance

Particulars	Details
Capital	Dispur
Largest City	Guwahati
Total Area	78,438 sq. km
Geographical Location	Latitude: 24°N–28°N Longitude: 90°E–96°E
Total Population (Census 2011)	3,12,05,576
Male Population (2011)	1,59,39,443
Female Population (2011)	1,52,66,133
Literacy Rate (Total)	72.19%
Male Literacy Rate	77.85%

Female Literacy Rate	66.27%
State Fabric	Muga Silk
State Beverage	Tea
Number of Districts	35
Sub-divisions	80
Development Blocks	219
Revenue Circles	184
Zilla Parishads	26
Total Towns (Census 2011)	214
Total Villages (Census 2011)	26,395
Lok Sabha Constituencies	14
Rajya Sabha Seats	7

Vidhan Sabha Constituencies	126
Police Stations (as of 31.03.2018)	314
Major Minerals	Coal, Petroleum, Natural Gas, Limestone, Dolomite, Sillimanite, Iron Ore, Glass Sand, Ceramic Clay, Uranium

Major Tribes	Bodo Kachari, Mising, Deori, Rabha, Tiwa (Lalung), Khamti, Sonowal Kachari, Tai Phake, Dimasa Kachari, Karbi, Barman, Hmar, Kuki, Rengma Naga, Zeme Naga, Hajong, Garo, Khasi, Jaintia, Mech
---------------------	--

State Symbols of Assam

Category	English Term	Assamese Term
State Song	<i>O My Dearest Country</i>	<i>O Mur Apunar Dekh</i>
State Motto	Hail Mother Assam	<i>Joi Aai Axom</i>
State Seal	Government of Assam	<i>Axom Sarkar</i>
State Language	Assamese	<i>Axomiya</i>
State Literary Society	Assam Sahitya Sabha	<i>Axom Xahitya Xobha</i>
State Festival	Bihu	<i>Bihu</i>
State Dance	Bihu Dance	<i>Bihu Naas</i>
State Flower	Foxtail Orchid	<i>Kopou Phul</i>
State Tree	<i>Dipterocarpus macrocarpus</i> (Hollong)	<i>Hollong</i>
State Animal	One-horned Rhinoceros	<i>Gor</i>
State Bird	White-winged Wood Duck	<i>Deo Haah</i>

Geographical overview of Assam

geographical location and extent

- Latitudinal Extent: 24° 8' N to 28° 2' N (approximately 4° latitudinal spread)
- Longitudinal Extent: 89° 42' E to 96° 1' E (approximately 6° longitudinal spread)
- Total Geographical Area: 78,438 square kilometers (approximately 2.39% of India's total area)
- International Boundaries: Bhutan (North), Bangladesh (South-West)
- Interstate Boundaries: Arunachal Pradesh (North-East), Nagaland (East), Manipur (East-South), Mizoram (South), Meghalaya (South), West Bengal (West), Tripura (South)
- **Gondwana Massif** → Formation of the Karbi Plateau.
- **Folded sedimentary rocks (Tertiary and Quaternary periods)** → Formation of folded mountains, hills, valleys, and gorges.
- **Structural depressions** → Formation of plains.

Assam Plateau

- The Assam Plateau is an extension of the Indian Peninsular Plateau.
- It forms a transitional link between the Shillong Plateau and the hill ranges of Nagaland.
- The plateau mainly consists of the Karbi Anglong Plateau.

Karbi Plateau

- The Karbi Plateau is the north-eastern extension of the Meghalaya Plateau.
- It is divided into two parts by the Kapili Fault:
 - ✓ **Hamren Plateau (south-western part)**
 - Area: approximately 3,000 km²
 - Contiguous with the Jaintia Plateau.
 - ✓ **Central Karbi Plateau**
 - Area: approximately 7,400 km².

Central Karbi Plateau

- Guava-shaped in outline, with a narrow extension towards the south.
- Bounded by the Dhansiri plains in the east and the Kalong–Kapili plains in the west.
- The southern boundary is marked by the southern Karbi Hills and the North Cachar Hills.
- Subjected to intense erosion under hot and humid monsoon conditions, resulting in a radial drainage pattern.

Main Rivers

- **East-flowing rivers:** Hariahjan, Deopani Nambor, Daturang, Kaliani, Diphalu.
- **West-flowing rivers:** Deopani, Misa, Diyu, Chapanala, Na-Noi, Digaru, Jamuna.
- **Elevation:** 100–1363 m above sea level.
- **Highest peaks:** Singhachen (1359 m) and Dambuksu (1363 m).
- The region also contains waterfalls and hot springs.

Hamren Plateau

- Contiguous with the Jaintia Hills and slopes from southwest to southeast.
- Dissected by the Kapili River.
- Most rivers of the region are tributaries of the Kapili.

Major rivers: Umiam (Kiling), Karbi Langpi, Barapani (Umkhen), Umud, Amlong (Kolonga), Amring, and Kapili.

Hills

- Part of the Patkai–Purvanchal hill system, representing the southern extension of the Himalayan ranges.
- Includes the Barail Range, characterised by parallel ridges, with the highest elevations located in the central part.

Northern Hill Ranges

- **Main Ranges:** Foothills of the Eastern Himalayas, including the **Mishmi Hills** and the **northern extension of the Patkai Range**
- **Average Elevation:** 1,000–2,000 metres above mean sea level
- **Orientation:** East–West alignment, parallel to the Brahmaputra Valley
- **Geological Age:** Tertiary formations; geologically young fold mountains
- **Physiographic Features:** Steep slopes, deep valleys, dense forest cover, and high rainfall
- **Significance:**
 - ✓ Act as a major watershed for numerous north-bank tributaries of the Brahmaputra
 - ✓ Rich in biodiversity and forest resources
- **Major Rivers Originating:** Subansiri, Jia Bharali, Puthimari, Pagladiya, Manas

Southern Hill Ranges

- **Major Ranges:** Karbi Anglong Hills, North Cachar Hills (Barail Range), Mikir Hills, Rengma Hills
- **Average Elevation:** 600–1,500 metres (some peaks exceed 1,500 metres)
- **Highest Peak:** Dambukso (Deopahar) in Karbi Anglong (~1,200 metres)
- **Orientation:** Predominantly East–West with local North–South spurs
- **Geological Structure:** Extension of the Meghalaya Plateau; composed mainly of Archaean and Precambrian rocks (geologically older than the northern hills)
- **Vegetation:** Dense tropical and subtropical forests; important biodiversity zone
- **Economic Resources:** Coal, limestone, and forest products
- **Major South-bank Tributaries Originating:** Kopili, Dhansiri (South), Jatinga, Diju

Other important hill ranges:

Hills	Key details
Mikir Hills	Location: South of Kaziranga National Park in Karbi Anglong district. Nature: Extension of the Meghalaya Plateau; among the oldest landforms of Assam. Features: Pear-shaped (~7,000 sq km) with radial drainage (Dhansiri, Jamuna). Highest peak: Dambukso.

Barail Hills	Location: Across Dima Hasao district and Cachar district, trending SW from Nagaland/Manipur toward the Jaintia Hills. Nature: Highest hill range of Assam; watershed between Brahmaputra basin and Barak basin. Features: 1,500–2,500 m (higher in south), tropical semi-evergreen to moist evergreen forests; includes Barail Wildlife Sanctuary. Highest peak: Singhason (1,713 m).
Karbi Anglong Hills	Central Assam; between Upper–Middle Brahmaputra and Barak Valley; 300–1,000 m (peaks >1,300 m); Archean rocks; Karbi Autonomous area
North Cachar Hills (Dima Hasao)	South-central Assam; 400–1,500+ m; highly dissected with deep gorges and poor connectivity; inhabited mainly by Dimasa tribe

Plains of Assam

Assam contains two major alluvial plains:

- **Brahmaputra Plain** — largest, approximately 58,315 km².
- **Barak Plain** — second largest, approximately 6,962 km².

Brahmaputra Plain (Central Assam Plain)

- **Location:** Central Assam, stretching from Sadiya in the east to Dhubri in the west
- **Length:** Approximately 720 km (east–west)
- **Average Width:** 80–90 km (varies from about 16 km at its narrowest to nearly 100 km at its widest)
- **Average Elevation:** 50–100 metres above mean sea level
- **Formation:** An alluvial plain formed by the depositional activity of the Brahmaputra and its tributaries
- **Soil Type:** New and old alluvium; highly fertile but prone to recurrent flooding
- **Surface Characteristics:** Predominantly flat to gently undulating terrain with numerous chars (riverine islands), beels (oxbow lakes), and marshes

- Economic Significance: Contains the majority of agricultural land, major urban centres, tea gardens, and the highest population concentration in the state
- Major Towns: Guwahati, Dibrugarh, Tezpur, Jorhat, and Nagaon

Subdivisions

- North Bank Plains Zone (NBPZ)
- Upper Brahmaputra Valley Zone (UBVZ)
- Central Brahmaputra Valley Zone (CBVZ)
- Lower Brahmaputra Valley Zone (LBVZ)

Barak Plain (Southern Assam Plain)

- Location: Southern Assam, comprising the districts of Cachar, Karimganj, and Hailakandi
- Separated from Brahmaputra Valley by: The Barail and Manipur hill ranges
- Area: Approximately 6,922 sq km
- Average Elevation: 30–50 metres above mean sea level
- Formation: An alluvial plain formed by the Barak River and its tributaries, such as the Katakhal, Jiri, Chiri, and Longai
- Characteristic Features: A relatively narrow valley surrounded by hills on all sides, with numerous beels and wetlands
- Climate: Receives higher rainfall than the Brahmaputra Valley and experiences more humid conditions

North Bank Tributaries

Tributary	Origin	Course / Districts	Confluence with Brahmaputra	Key Features
Subansiri	Tibet	Enters via Arunachal → Lakhimpur	Near Lakhimpur	Largest north-bank tributary by discharge; Subansiri Lower HEP – 2,000 MW (under construction)
Jia Bharali (Kameng)	Eastern Himalayas (Arunachal Pradesh)	Tezpur, Sonitpur	Near Tezpur	Causes frequent floods in Sonitpur & Darrang
Dhansiri (North)	Nagaland Hills	Golaghat	Dhansirimukh	Length ~352 km; different from South Dhansiri
Puthimari	Bhutan Hills	Nalbari, Barpeta	Near Puthimari Ghat	Flood-prone river
Pagladiya	Bhutan	Nalbari, Barpeta	Near Pagladiya mouth	High sediment load → siltation problems

- Economic Activities: Predominantly paddy cultivation, tea plantations, and the presence of limestone deposits
- **Main rivers and tributaries:** Barak, Jiri, Labak, Madhura, Dalu, Jatinga, Langai, and Sonai.

Rivers of Assam

- The river system of Assam is dominated by the Brahmaputra and the Barak rivers.

Brahmaputra River

- **Origin:** The Brahmaputra originates from the **Chemayungdung (Angsi) Glacier** in the **Kailash Range** of Tibet at an elevation of about **5,150 m**.
- **Tibetan name:** Known as the **Yarlung Tsangpo (Tsangpo)** in Tibet; it flows eastward for about **1,625 km**.
- **Entry into India:** Enters **Arunachal Pradesh** after cutting a deep gorge near **Namcha Barwa Peak (7,757 m)**; here it is called the **Siang (Dihang)**.
- **Formation of Brahmaputra:** Near **Sadiya (Tinsukia district)**, the **Dibang** and **Lohit** join the Siang; from this confluence it is officially called the **Brahmaputra**.
- **Course in Assam:** Flows about **640–700 km** west–southwest through the **Assam Valley**.
- **Exit from Assam:** Enters **Bangladesh** near **Dhubri**, where it is known as the **Jamuna**.
- **Final course:** Joins the **Ganga (Padma)** in Bangladesh and finally flows into the **Bay of Bengal** as the **Meghna**.

Manas	Tibet → Bhutan → Assam	Barpeta	In Barpeta district	Flows through Manas National Park ; major high-discharge tributary
Sankosh	Tibet → Bhutan	Forms Assam–West Bengal boundary	Near Dhubri	Important boundary river

South Bank Tributaries

Tributary	Origin	Course / Districts	Confluence with Brahmaputra	Key Features
Dibang	Mishmi Hills (Arunachal Pradesh)	Upper Assam	Joins Siang near Sadiya	Part of Siang–Dibang–Lohit system; Dibang Multipurpose Project – 2,880 MW (proposed)
Lohit	Eastern Tibet	Arunachal Pradesh → Sadiya	Near Sadiya	Forms Brahmaputra with Siang & Dibang; length in India ~200 km
Dhansiri (South)	Laisang Peak (Nagaland)	Golaghat, Karbi Anglong	Dhansirimukh	Length ~352 km
Kopili	Meghalaya Hills	Karbi Anglong, Nagaon, Morigaon	Near Morigaon	Kopili HEP – 275 MW (operational); length ~290 km
Digaru	Karbi Anglong Hills	Nagaon	Near Samaguri	Flood-prone
Kulsi	Khasi Hills (Meghalaya)	Kamrup	West of Guwahati	Length ~180 km
Krishnai	Meghalaya Plateau	Goalpara, Bongaigaon	Near Goalpara	Important south-bank tributary
Dudhnoi	Garo Hills (Meghalaya)	Goalpara	Near Dudhnoi mouth	Flash floods due to steep upper course
Jinari	Karbi Anglong Hills	Nagaon	Local confluence	Small tributary

Barak River

- **Origin:** Rises in the Manipur Hills at Liyai village at an elevation of about **2,331 m**.
- **Course in Assam:** Enters Assam through **Cachar district** and flows through the Barak Valley—Cachar, Hailakandi, and Karimganj.
- **Length:** Approximately **900 km**, of which about **524 km** lies in Assam.

- **Exit from India:** Enters Bangladesh near Karimganj, where it bifurcates into the Surma River and Kushiya River.
- **Final Drainage:** These rivers reunite to form the Meghna River, which later joins the Ganga–Brahmaputra system before entering the Bay of Bengal.
- **Characteristics:** Highly meandering with wide floodplains; prone to monsoon flooding in the Barak Valley.

Major Tributaries of the Barak

Tributary	Origin	Confluence with Barak	Notable Features / Importance
Jiri	Manipur Hills (north of Cachar)	Near Jirighat, Cachar district	Forms part of the Assam–Manipur boundary; important for local irrigation and transport corridor (Jirighat gateway).
Chiri	Manipur Hills	Upstream section of Barak in Cachar	Small seasonal tributary; contributes to local drainage and monsoon flow.

Sonai	Manipur Hills	Near Sonai–Hailakandi region	Supports agriculture in southern Cachar; prone to flooding during heavy rains.
Rukni	Mizoram Hills	Near Cachar–Mizoram border	Short but steep gradient; carries high sediment load during monsoon.
Katakhal	Mizoram Hills	Hailakandi district	One of the more significant tributaries; causes recurrent floods in Hailakandi plains; important for paddy cultivation.
Dhaleswari	Manipur Hills	Cachar district (near Silchar region)	Major right-bank tributary; enhances Barak’s discharge near Silchar; flood-prone.
Longai	North Cachar Hills (Dima Hasao)	Northern Cachar plains	Forms low-lying wetlands and beels; important for fisheries and local agriculture.

Soils

Soil Type	Location	Characteristics	Crops / Uses
Alluvial Soils	Brahmaputra and Barak plains	Young alluvium: recent deposits, grey to mottled grey, moderate to very deep. Old alluvium: older and more compact deposits. Generally loamy and highly fertile.	Loamy soils support almost all crops. Sandy soils are suitable for root and vegetable crops such as potato, carrot, and tomato. Clayey soils retain moisture and are suitable for rice, wheat, jute, sugarcane, and maize.
Piedmont Soils	Narrow northern belt along the Himalayan foothills (Bhabar and Tarai regions)	Bhabar soils are deep, clay-loamy, and contain boulders and pebbles. Tarai soils are sandy to silty loams, often waterlogged and swampy.	Dominated by tall grasses; agriculture is limited due to drainage conditions.
Hill Soils	Southern hill regions, Karbi Plateau, and Barail Range	Red sandy soils are deep, well-drained, moderately acidic, and rich in organic matter. Red loamy soils are deep, dark greyish-brown, slightly to moderately acidic, and low in nitrogen, phosphorus, and humus.	Limited cultivation; largely under forest cover with some shifting and terrace agriculture.
Lateritic Soils	North Cachar Hills, southern Karbi Plateau, and foothills of the Barail Range	Dark-coloured, fine-textured, heavy loams; poor in nitrogen, phosphorus, potassium, and lime due to leaching.	Highland areas grow millets and pulses, while lowland areas support cotton, wheat, rice, sugarcane, banana, and tea.

3

CHAPTER

Minerals and Power Resource in Assam

Assam is fairly rich in mineral resources. Apart from petroleum, coal, and limestone, which have been extracted for a long time, the state also possesses several other economically valuable minerals.

Petroleum and Natural Gas

Assam is the oldest oil-producing state in India. Commercial oil production began in 1901 at Digboi, marking the beginning of petroleum production in the country.

- **Digboi Oilfield:** Located in Upper Assam in Tinsukia district, Digboi is known as the “Oil City of Assam.” It houses India’s oldest operating oil refinery, established in 1901. Production has declined significantly over time due to resource depletion.
- **Naharkatiya Oilfield:** Discovered in 1953 in Dibrugarh district, it is one of the most productive oilfields in Assam. The field is connected to the Numaligarh Refinery through pipeline networks.
- **Moran–Hugrijan Oilfield:** Located in Dibrugarh district, this oilfield is important for both crude oil and natural gas production and contributes significantly to Assam’s petroleum output.
- **Rudrasagar Oilfield:** Situated in Sivasagar district and discovered in the 1960s, it is known for moderate levels of production.
- **Geleki Oilfield:** Located in Sivasagar district, it contains important reserves of both petroleum and natural gas.
- **Spatial Pattern:** Most major oil and natural gas fields are concentrated in the Upper Assam Belt, extending from Digboi in the east to Geleki in the west. This belt follows the Brahmaputra Valley sedimentary basin.

Coal

Assam possesses coal deposits of relatively low grade, concentrated in specific regions. The coal is primarily of Tertiary age and is younger and generally lower in quality compared to Gondwana coal.

- **Makum Coalfield:** Located in Tinsukia district near Margherita and Ledo, it is the largest coalfield in Assam. Coal produced here is mainly used by local industries and railways. Mining operations are managed by the North Eastern Coalfields (NEC) under Coal India Limited.
- **Nazira Coalfield:** Located in Sivasagar district, this coalfield contains small reserves. Commercial exploitation remains limited due to thin coal seams and low quality.
- **Mikir Hills Coalfield:** Situated in Karbi Anglong district, it contains scattered deposits with minimal current production.
- **Characteristics of Assam Coal:** Assam coal generally has high moisture and sulphur content and a relatively low calorific value. It is mainly used in tea estates, brick kilns, and local industries.

Major minerals found in Assam are as follows:

Mineral	Places in Assam
Iron Ore	Foothills of Tirap and Nagaland; Jaipur area (Upper Assam Belt); near Dhubri along the Bilasipara hills (especially Chanderdinga Hills and Melajgarh near Abarapuri in Bongaigaon district); near Hahim (Kamrup); Malanga area (Goalpara)
Copper	Found in small quantities in the Mahamaya Hills (Dhubri district) and along the Barjneeel River (Karbi Anglong)
Gold	Near Haflong (North Cachar Hills); alluvial gold was formerly extracted from the Subansiri, Dibang, and Dikrong rivers

Coal	Karbi Anglong, Ledo, Jaipur, Makum, Margherita, and Naginimara areas
Petroleum	Digboi, Naharkatiya, and Duliajan
Natural Gas	Naharkatiya, Moran, Lakwa, and Rudrasagar
Limestone	Dilai Hills, Koilajan, Sainilanchu, and Silbheta (Karbi Anglong); Umrangso and Garampani (North Cachar Hills)

Gypsum	Dimasa Reserved Forest of the Karbi Hills; near Badarpur (Cachar district); near Haflong
Mica	Holamara Hills
Quartz & Feldspar	Hahim (Kamrup); Silbheta (Karbi Anglong); Pancharatna (Goalpara)
Sulphur	Found in areas associated with tertiary coal deposits such as Ledo, Makum, and Margherita

Petroleum Refineries in Assam

Refinery	Location / Year of Commissioning	Operator	Key Features / Significance
Digboi Refinery	Digboi, Tinsukia district — 1901	Indian Oil Corporation Limited (IOCL)	India's oldest operating refinery; processes crude oil from Digboi and nearby oilfields; historically significant in India's petroleum industry.
Guwahati Refinery (Noonmati)	Noonmati, Kamrup Metropolitan district — 1962	Indian Oil Corporation Limited (IOCL)	First public sector refinery in India; processes crude from Assam as well as imported sources; important supplier for Northeast India.
Numaligarh Refinery	Numaligarh, Golaghat district — 1999	Numaligarh Refinery Limited (NRL) — joint venture of BPCL, OIL, and Government of Assam	Largest refinery in Assam; major regional energy hub; undergoing expansion to enhance capacity.
Bongaigaon Refinery	Bongaigaon district — 1974	Indian Oil Corporation Limited (IOCL)	Processes imported crude; supplies petroleum products across Northeast India and neighbouring regions.

Pipeline Network:

The refineries are interconnected through a network of crude oil and product pipelines. The Numaligarh–Siliguri pipeline transports petroleum products to North Bengal and Sikkim.

Power Sector in Assam

- **Power as a Growth Driver:** Electricity forms a fundamental component of economic infrastructure. Expansion of the power sector has a direct multiplier effect on industrial growth, agriculture, and overall economic development.
- **Institutional Framework:** The Assam State Electricity Board (ASEB) functions as the nodal state agency responsible for the management and regulation of the electricity sector.

- **Functional Unbundling:** Power sector operations are carried out through three specialised subsidiaries:
 - ✓ **Assam Power Generation Corporation Limited (APGCL):** Responsible for power generation.
 - ✓ **Assam Electricity Grid Corporation Limited (AEGCL):** Responsible for power transmission.
 - ✓ **Assam Power Distribution Company Limited (APDCL):** Responsible for power distribution and supply.

Hydropower and Thermal Power Projects in Assam

Type of Project	Project Name	Location / Notes
Hydropower	Karbi Langpi Hydroelectric Project	Karbi Anglong
	Kopili Hydroelectric Project	Umrongso
	Pagladia Hydroelectric Project	Kamrup / Nalbari
	Subansiri Lower Hydroelectric Project	Assam
Thermal Power	Namrup Thermal Power Project	Dibrugarh
	Chandrapur Thermal Power Project	Guwahati
	Lakua Thermal Power Station	Sivasagar
	Bongaigaon Thermal Power Project	Salekati
	Borgolai Thermal Power Project	Margherita
	Kothalguri Thermal Power Project	Near Duliajan Oil Town; established with overseas economic aid and Japanese collaboration
	Galeki Thermal Power Project	Sivasagar
	Amguri Thermal Power Project	Sivasagar

Renewable Energy

- Assam is increasingly exploring solar, biomass, and small hydropower projects to diversify its energy mix and achieve sustainability goals.
- **Solar Energy:** Assam receives moderate solar radiation, averaging about 4–5 kWh/m² per day. Solar parks are being developed in districts such as Nagaon, Barpeta, and Kamrup. The state aims to achieve approximately 200 MW of solar power capacity under its solar energy policy.
- **Biomass Energy:** The availability of agricultural residues, tea waste, and bamboo provides significant biomass energy potential. Small biomass-based power plants

operate mainly in tea-producing districts. The estimated biomass power potential in the state is around 200–250 MW.

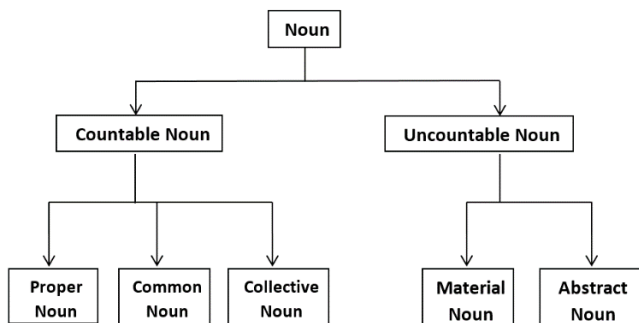
- **Small Hydropower:** Small hydropower projects with capacities below 25 MW are being promoted. Potential sites have been identified in districts such as Karbi Anglong, Dima Hasao, and Kamrup, with an estimated potential of about 150–200 MW.
- **Policy Framework:** Renewable energy initiatives in the state are coordinated by the Assam Power Generation Corporation Limited (APGCL). The state government provides incentives such as feed-in tariffs and capital subsidies to encourage private investment in renewable energy projects.

30 CHAPTER

Noun

A noun is a name of person, place, thing, idea, action, a quantity.

1. Types –



(1) **Proper noun** – Denotes a particular person, place or thing.

Ex. Akshay, Pooja, Ankita etc.

(2) **Common noun** – Is the name given in common to every person or thing of the same class or kind.

Ex: Boy, girl, company etc.

(3) **Collective noun** – Denotes a group or collective of similar individuals considered as one complete whole.

Ex: Class, Staff, Army, Parliament etc.

(4) **Material noun** – Denotes matter or substance of which a thing is made of.

Ex: Iron, gold, silver etc.

(5) **Abstract noun** – Is usually the name of a quality, action or state considered apart from the object to which it belongs.

Ex: Virtue, darkness, kindness, happiness etc.

2. Some other types according to number -

(1) **Singular noun** – Boy, girl, man, car etc.

(2) **Plural noun** – Boys, girls, men, cars etc.

(3) **Countable nouns** – Are the names of objects, people etc. that we can count.

Ex: Book, doctor, horse, apple etc.

(4) **Uncountable nouns** – Are the names of things which we can't count.

They mainly denotes substance and abstract things.

Ex: Milk, Oil, Sugar, Gold, Honesty etc.

3. Noun and the Numbers :-

Singular noun ending	Plural noun ending	Singular	Plural
-s, -ss, -ch, -x, -zz	-es	Man	Men
Ex. Focus	Focuses	Woman	Women
Princess	Princesses	Mouse	Mice
Box	Boxes	Fish	Fish or Fishes
Buzz	Buzzes	A sheep	Ten sheep
-o	-s or -es	Child	Children
Ex. Hero	Heroes	Ox	Oxen

Piano	Pianos	A woman doctor	Several women doctors
Potato	Potatoes	A bookcase	Two bookcase
Consonant +y	-ies	An Indian take away	Two Indian take away
Baby	Babies	A passer by	Several passers by
Hobby	Hobbies	Glassful	Glassfuls
Vowel +y	-s	Spoonful	Spoonfuls
Key	keys		
Ray	rays		
-f	-s or -ves		
Ex. Hoof	Hoofs or hooves		
Dwarf	Dwarfs or dwarves		
Thief	Thieves		
Roof	Roofs		
-fe	-ves		
Knife	Knives		
Life	Lives		
On	a	Ex.	
Phenomenon	Phenomena	Since I had never seen a falling star, seeing one on my honeymoon was real phenomena. (Use Phenomenon in place of Phenomena)	
Criterion	Criteria	As we all know sunrise is a great phenomena. (✗) a great Phenomenon (✓)	

(a) Is (Singular) – es (Plural) -

Singular (is)	Plural (es)
Analysis	Analyses
Diagnosis	Diagnoses
Casis	Cases
Thesis	Theses
Crisis	Crises

(b) US (singular) – I (plural)

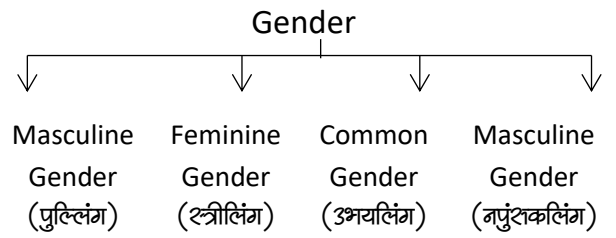
Cactus	-	Cacti
Focus	-	Foci
Fungus	-	Fungi

Nucleus	-	Nuclei
Syllabus	-	Syllabi, Syllabuses
Radius	-	Radii

4. Some nouns that have different meaning in singular and plural form

Singular	Plural
Force (physics term)	Forces (soldier)
Air	Airs (false way of behaving)

Return	Returns (calculation of income)
Iron	Irons (shackles)
Sand	Sands (desert)
Abuse	Abuses (evil words)
Good	Goods (moveable property)
Water	Waters (sea)
Work	Works (literary pieces)
Fruit	Fruits (result)
Wit	Wits (intelligent)



5. Noun and the Gender -

Gender - The Noun which denotes male of female sex is called gender.

Such as – Horse }
 Dog }
 Ox } To denote male sex
 Father }
 Mare }
 Bitch }
 Cow } To denote female sex
 Mother }

- (1) **Masculine Gender** - The noun which denotes male sex is called Masculine Gender.
Ex. Boy, Father, Brother, etc.
- (2) **Feminine Gender** - The noun which denotes female sex is called Feminine Gender.
Ex. Girl, Mother, sister etc.
- (3) **Common Gender** - The noun which does not specify the sex but only indicate a living thing is called Common Gender.
Ex. Baby, Student, Professor etc.
- (4) **Neuter Gender** - The noun which denotes a non-living object or thing with life is called Neuter Gender.
Ex. Tree, inkpot, pen, table etc.

Masculine words	Feminine words	Masculine words	Feminine words
Nephew	Niece	Husband	Wife
Man	Woman	uncle	Aunt
Brother	Daughter	Sir	Madam
Bachelor	Spinster	Bridegroom	Bride
Bull	Cow	Author	Authoress
Cock	Hen	Count	Countess
Grand-Father	Grand-Mother	Land-lord	Land-Lady
Brother-in-law	Sister-in-law	Son-in-law	Daughter-in-law
Director	Directress	Votary	Votaress
Boyfriend	Girlfriend	Chairman	Chair woman

6. Some important Rules of Gender

Rule - 1

There are some nouns which are used to denote beauty, gracefulness, gentleness etc. In this condition, they are considered as feminine gender and it is used as singular pronoun she, her, hers, herself etc, according to the need.

Like as -

The moon, The Earth, Nature, flattery, Spring, hope, virtue, charity, humility, mercy, faith, peace, ship, river, nation, jealousy, liberty, fame, city, country, car, modesty, train, pride, truth, justice etc.

Ex.

- (i) The moon shed her light on the bank. (✓)
The moon shed its light on the bank. (✗)
- (ii) Spring has her own charms and delights. (✓)
Spring has its own charms and delights. (✗)

Rule - 2

If girl/woman/lady/ female, are used before the common gender nouns, then we used singular pronoun of feminine gender she, her, hers, herself according to use.

Like as -

Girl-Friend, Girl-student, Female-child, woman-teacher, woman-doctor, woman-conductor etc.

Ex.

- (i) A girl student should not neglect her home. (✓)
A girl student should not neglect his/its home. (✗)
- (ii) A woman-doctor examines the patient herself. (✓)
A woman-doctor examines the patient himself/itself. (✗)

Rule - 3

There are some nouns which are used to denote strength, firmness, energy etc. In this condition, they are considered as masculine gender and it is used as singular pronoun - he, him, his, himself according to the need.

Like as -

The sun, time, death, winter, wind, summer, thunder, Dear, love, war, wine etc.

Ex.

- (i) The sun shot his bright rays. (✓)
The sun shot her bright rays. (✗)
- (ii) Death always knows his victim. (✓)
Death always knows her victim. (✗)

Rule - 4

There are some nouns of masculine gender which is also used as an adjective for a woman.

Ex:

- (i) Veena is a lover of fine arts.
(ii) She is a master of English.

Rule - 5

Each, every, either, neither etc. words are used as distributive pronoun or adjectives. They are pronouns of common gender, It is generally used singular pronouns - he, him, his, himself of masculine gender. but when female gender it known, the singular pronoun - She, her, hers, herself of feminine gender is used.

Ex.

- (i) Every student should do his duty. (✓)
Every student should do its duty. (✗)
- (ii) Each of us had finished his work. (✓)
Each of us has finished its work. (✗)

Rule - 6

Everything, something, anything and nothing are used as indefinite pronouns in sentence, It is called neuter gender pronouns for these, singular pronouns- it, its, itself of neuter gender are used.

Ex.

- (i) Everything should be kept in its order. (✓)
Everything should be kept in his order. (×)

Rule - 7

For lower animals and non-living things, we used pronouns (it, its, itself) of neuter gender.

Ex.

- (i) He has killed a snake, it is still lying on the road. (✓)
He has killed a snake, he is still lying on the road. (×)
- (ii) We cannot write with this pen because its nib is broken. (✓)
We cannot write with this pen because his nib is broken. (×)

Rule - 8

Collective nouns, jury crow etc. words are denoted the sense of group. It is considered as neuter gender - for these, pronouns (it, its, itself) of neuter gender are used.

Ex.

- (i) The committee will submit its report within six months. (✓)
The committee will submit their report within six months. (×)
- (ii) The team has declared that it will win the match. (✓)
The team has declared that they will win the match. (×)

But the above collective nouns make sense of 'each member' then plural pronoun - they, them, their, theirs, them selves are used for this.

Ex.

- (i) The committee have met and they have rejected the proposal. (✓)
The committee have met and it has rejected the proposal. (×)

Rule - 9

There are some nouns that are used as common gender nouns.

Like as -

Advocate, assistant, cousin, clerk, client, criminal, cyclist, dancer, dealer, doctor, novelist, professor, pupil, secretary, singer, worker, writer, teacher, politician, servant, friend, fool, engineer, helper ... etc.

They are used as masculine and feminine gender according to the need.

Masculine	Feminine
He is my doctor.	She is my doctor.
He is a teacher.	She is a teacher.

7. Important Rules -

Rule 1 - We always use singular verb with uncountable nouns.

- Plural of these words does not exist.
- Some examples of uncountable nouns are –

Rule 2 – Certain noun exist in plural forms

Machinery	Scenery	Information	Luggage
Advice	Poetry	Evidence	Help
Furniture	Bread	Wood	Fuel
Hair	Crockery	Cash	Money

only. Thus 's' cannot be removed from such nouns.

- They take plural verb form.

Like as -

Scissors	Jeans	Tweezers	Shorts
Spectacles	Remains	Congratulations	Pliers
Binoculars	Pajamas	Pants	

Ex.

- (i) Where are my pants ? (Plural)
(ii) Where are the tongs ? (Plural)

Rule 3 – There are some nouns that indicate – length, measure, money, weight or number. When they are preceded by numeral, they remain unchanged in form.

Like as -

Foot, meter, pair, score, dozen, head, year, hundred, thousand, million, billion, trillion.

- (1) If there is a number before them, then 'S' will not be used.

Ex.

- (i) Three dozens pencils. (X)
Three dozen pencils. (✓)

- (2) If 'of' after them than use 'S'.

Ex.

- (i) Thousand of people died of cholera last year. (X)
Thousands of people died of cholera last year. (✓)

- (ii) I have seven dozens of shoes. (X)
I have seven dozen of shoes. (✓)

Rule 4 – Some nouns are singular in meaning, but they are used as plural nouns and always take a plural verb.

Like as -

cattle, gentry, vermin, peasantry, artillery, people, company, police

Ex.

- (i) The cattle is grazing in the ground. (X)
The cattle are grazing in the ground. (✓)
(ii) Police has controlled the situation. (X)
Police have controlled the situation. (✓)

Rule 5 – Some nouns like – mathematics, physics, dynamics, ethics, linguistics, meta physics, optics, economics, news, politics, mumps, measles, rickets, athletics, mechanics etc. are in plural forms but used as a singular noun.

Ex.

- (i) Mathematics is the science of quantity.
(ii) Bad news travels fast.

Rule 6 – If the same noun is repeated after preposition, the noun will be singular.
noun (s) + preposition + noun (s)

Ex.

- (i) Town after town were devastated. (X)
Town after town was devastated. (✓)
(ii) Row upon row of pink marble look beautiful. (X)
Row upon row of pink marble looks beautiful. (✓)

Rule 7 – If a numeral adjective and a fraction are used with a noun, the noun is used with the numeral and the noun will be in singular.

Ex.

- (i) She gives me one (Numeral Adj.) and a half (Fraction) rupee. (Noun) (X)
(ii) She gave me one rupee and a half. (✓)
(iii) He gave me two and a quarter rupee. (Incorrect) (X)
He gave me two rupees and a quarter. (✓)

Rule 8 – Don't say "family members / cousin brother or "cousin sister".

Ex.

- (i) The members of the family. (✓)
(ii) He or she is my cousin. (✓)
(iii) He is my english teacher. (✓)

Rule 9 - Certain nouns/words are used in colloquial english which is wrong, some of them are following :-

Wrong	Correct
Cousin brother/cousin sister	Cousin
Pick pocketeer	Pick pocket
Good name	Name
Big blunder	Blunder (means a big mistake)
Strong breeze	Strong wind
Bad dream	Nightmare
Proudy	Proud
According to me	In my opinion

8. Grammar Rules for Possessive Nouns

Rule 1

Making singular nouns possessive – Add an apostrophe ('s)

Ex.

- (i) Kitten's toy, Joe's car, James's book/
James's (Singular noun)
(ii) Women's dresses, sheep's pasture in 'S'. (Plural not ending)

Rule 2

Making plural nouns possessive – Add just an apostrophe to plural nouns that already end in 'S'.

Ex.

- (i) The companies' workers went on strike together.
- (ii) You need to clean out the house's stalls.

Rule 3

Making hyphenated nouns and compound nouns plural –

Ex.

- (i) My mother-in-law's recipe for meatloaf is my husband's favorite.
- (ii) The United States post office's stamps are available in rolls or pockets.

Rule 4

(1) Possessives: Joint or separate ownership –

Ex.

- (i) The administrative assistant completed Arvind's and Rohit's report.
- (ii) We are planning to attend Sam and Teresa's retirement party.
(One party is being held to celebrate both people's retirement, so the party "belongs" to speak to them jointly.)

(2) We use 's with living things –

- Mohit's Car
- Priya's watch
- The bag of Mohan

(3) We don't use 's with –

- Nonliving thing
- Table's leg (X)
- Leg of the Table (✓)

Rule 5

When two nouns are in apposition, the possessive sign ('s) is added to the latter only.

Ex.

- (i) I am going to Ram Lal's, my friend's village. (X)

I am going to Ram Lal, my friend's village. (✓)

Rule 6

The double possessive should not be used –

Ex.

- (i) Ram's sister's marriage is on 2nd November. (X)
The marriage of Ram's sister on 2nd Nov. (✓)
- (ii) The President's brother's wife died yesterday. (X)
The wife of President's brother died yesterday. (✓)

Rule 7

Possessive sign is also used with the following pronouns –

Anyone	Anybody	Nobody
Somebody	No one	Each other
Everyone	Everybody	
One another	Someone	

Ex.

- (i) The student should follow the suggestions of their teacher and not somebody else. (X)
The student should follow the suggestions of their teacher and not somebody else's (✓)

Rule 8

When the two nouns are used after one of the possession or ownership is not shown by possessive sign ('s) but it is shown by proposition of –

Ex.

- (i) One of my friend's wife was killed in an accident. (X)
The wife or one of my friends was killed in an accident. (✓)

Exercise

1. Though we have reached at the high (A)/ level of progress in the field (B)/ of medicines, many(C)/ million of period of malaria (D).
2. We have visited many (A)/ firms this year but only one of them is (B)/ suitable for our work, which you admire (C)/ is Naman's, Shivam's and Rohan's(D).
3. The employees greeted the (A)/ manager and his husband with charming (B)/ smile so as to try to make (C)/ the condition less vulnerable (D).
4. The economics of the project makes it (A)/ impossible to the experience (B)/ of great opportunities which can achieves the (C)/ world class performance in the reported approach (D).
5. When our beloved teachers and seniors (A)/ came across to me, we caught one (B)/ another hands and talked for (C)/ many hours after a very long time (D).
6. After a complaint was filled (A)/ the police teams was given the photograph (B)/ of the accused from (C)/ the CCTV footage recorded at the hotel (D).
7. This company cannot work properly (A)/ because it never recruits any talented (B)/ sale representative the most (C)/ important pillar in making profits in the market (D).
8. My parents stop my brother-in-law (A)/ going out late at night because (B)/ the situations are not so (C)/ much good in this area now-a-days (D).
9. My sister(a)/ has read (b)/ pages after pages of the bible (c)/ No error (d).
10. The manager put forward (a)/ a number of criterions (b)/ for the post (c)/ no error (d).
11. I like (a)/ the poetries (b)/ of Byron and Shelley(c)/ No error (d).

12. The driver showed (a)/ great talent in keeping (b)/ the damaged car under control (c)/ no error (d).
13. When I entered the bedroom (a)/ I saw a snake crawling (b)/ on the ground (c)/ no error (d).
14. It is very difficult (a)/ to chase (b)/ a huge score in the (c)/ fourth inning (d)/ no error (e).
15. It is a big blunder (a)/ but we had (b)/ to ignore it (c).

Answers

1. (d) use millions instead of million
2. (d) use Naman, Shivam and Rohan's instead of 'Naman's, Shivam's and Rohan's.
3. (b) her husband
4. (a) Make
5. (c) another's hands
6. (b) team
7. (c) sales representative
8. (a) use 'brother-in-law's' instead of 'brother-in-law'
9. (c) page after page
10. (b) criteria is plural of 'criterion'
11. (b) poetry (uncountable noun), hence it is singular and it does not have any plural form.
12. (b) Use 'Skill' instead of talent.
13. (c) Use 'Floor' instead of ground.
14. (d) Use 'Innings' instead of inning.
15. (a) Blunder means big mistake. Hence big blunder is superfluous.