



UPSC – CSAT

Civil Services Exam

Union Public Service Commission

Part - 2

Numerical Ability



UPSC – CSAT (ENGLISH)

CONTENTS

Numerical Ability		
1.	Percentage	1
2.	Profit & Loss	12
3.	Partnership	19
4.	Average	24
5.	Number System	32
6.	Order of Magnitude	43
7.	Simplification	45
8.	Surds & Indices	56
9.	LCM & HCF	66
10.	Time & Work	72
11.	Pipe & Cistern	80
12.	Speed, Time and Distance	89
13.	Boat & Stream	96
14.	Ratio & Proportion	103
15.	Mixture & Allegation	110
16.	Simple Interest	116

17.	Compound Interest	123
18.	Permutation & Combination	131
19.	Probability	140
20.	Measures of Central Tendency	151
21.	Mensuration	161
22.	Algebra (Equation & Factors)	182
23.	Sets	196
24.	Geometry	200

Percentage

- Percentage means 'Per hundred'.
- The fraction whose denominator is 100, is called percentage and the numerator of that fraction is called percentage rate.
- 5 out of 100 = $\frac{5}{100} = 5\%$
- 10 out of 100 = $\frac{10}{100} = 10\%$
- That is, when an amount is compared with 100, it is called percentage. The basis with which the comparison is made. In the fraction, the base will be called the denominator.

Conversion From Percentage to Fraction

$100\% = 1$	$10\% = \frac{1}{10}$	$5\frac{5}{19}\% = \frac{1}{19}$
$50\% = \frac{1}{2}$	$9\frac{1}{11}\% = \frac{1}{11}$	$5\% = \frac{1}{20}$
$33\frac{1}{3}\% = \frac{1}{3}$	$8\frac{1}{3}\% = \frac{1}{12}$	$4\frac{1}{6}\% = \frac{1}{24}$
$25\% = \frac{1}{4}$	$7\frac{9}{13}\% = \frac{1}{13}$	$4\% = \frac{1}{25}$
$20\% = \frac{1}{5}$	$7\frac{1}{7}\% = \frac{1}{14}$	$2\frac{1}{2}\% = \frac{1}{40}$
$16\frac{2}{3}\% = \frac{1}{6}$	$6\frac{2}{3}\% = \frac{1}{15}$	$37\frac{1}{2}\% = \frac{3}{8}$
$14\frac{2}{7}\% = \frac{1}{7}$	$6\frac{1}{4}\% = \frac{1}{16}$	$62\frac{1}{2}\% = \frac{5}{8}$
$12\frac{1}{2}\% = \frac{1}{8}$	$5\frac{15}{17}\% = \frac{1}{17}$	$57\frac{1}{7}\% = \frac{4}{7}$
$11\frac{1}{9}\% = \frac{1}{9}$	$5\frac{5}{9}\% = \frac{1}{18}$	$66\frac{2}{3}\% = \frac{2}{3}$
$80\% = \frac{4}{5}$	$75\% = \frac{3}{4}$	

Note -

- (i) To convert a fraction or a decimal fraction or an integer into a percentage, multiply it by 100.
- (ii) To convert a percentage to a fraction, divide it by 100.

- One number is what percent of another number –

$$\% \text{ Quantity} = \frac{\text{Given number}}{\text{Basic (another number)}} \times 100$$

Ex.1 What percent of 48 is 6 ?

Sol. Let x % of 48 = 6

$$\text{Now, } 48 \times \frac{x}{100} = 6$$

$$\frac{12x}{25} = 6$$

$$x = \frac{6 \times 25}{12} = 12 \frac{1}{2}$$

The percent $12 \frac{1}{2}$ % of 48 is 6.

Ex.2 Convert $\frac{9}{16}$ into percentage.

Sol. $\frac{9}{16} = \left(\frac{9}{16} \times 100 \right) \% = \frac{225}{4} \% = 56 \frac{1}{4} \%$

Ex.3 When 60 is subtracted from 60% of a number, the result is 60. The number is-

- (a) 120 (b) 150 (c) 180 (d) 200

Sol. (b)

Let the number be x, then –

$$X \times 60\% - 60 = 60$$

$$\Rightarrow 0.60x - 60 = 60$$

$$\Rightarrow 0.60x = 120$$

$$\Rightarrow x = \frac{120}{0.60}$$

$$X = 200$$

∴ The number is 200.

If there is a percentage change

Case I – If there is increase of x_1 % & x_2 % then –

$$\text{Percentage increase} = x_1 + x_2 + \frac{x_1 \cdot x_2}{100}$$

Case II – If there is decrease of x_1 % & x_2 % then –

$$\text{Percent decrease} = x_1 + x_2 - \frac{x_1 \cdot x_2}{100}$$

Case III – If there is increase of $x_1\%$ and decrease of $x_2\%$ then –

$$\text{Percentage change} = x_1 - x_2 - \frac{x_1 \cdot x_2}{100} \left[\begin{array}{l} x_1 = \text{Always percentage increase} \\ x_2 = \text{Always percentage decrease.} \end{array} \right]$$

Note- If you want to calculate the percentage change in expenses, sales income, revenue, area, etc., then the same rule will be used.

Ex.1 Two successive price increases of 10% and 10% of an article are equal to which one single price increase?

- (a) 19% (b) 20% (c) 21% (d) 22%

Sol. (c)

Let the initial price of any item = 100

New price = 110 % of 100 of 110%.

$$\left(100 \times \frac{110}{100} \times \frac{110}{100} \right) = 121 = 21\%$$

Hence, the single price increase is equal to 21 percent.

Ex.2 The price of laptop is increased by 25%. Now by what percent is the price increased for the second time so that the total increase becomes 35%?

- (a) 7.5 (b) 9 (c) 8 (d) 10

Sol. (c)

Given that –

Price increased by 25% = x

The overall increase was 35%.

Formula:

$$\text{Total Increment} = x + y + \frac{xy}{100}$$

Calculation:

$$\Rightarrow 35 = 25 + y + \frac{25 \times y}{100}$$

$$\Rightarrow 35 = 25 + y + \frac{y}{4}$$

$$\Rightarrow 140 = 100 + 4y + y$$

$$\Rightarrow 140 - 100 = 5y$$

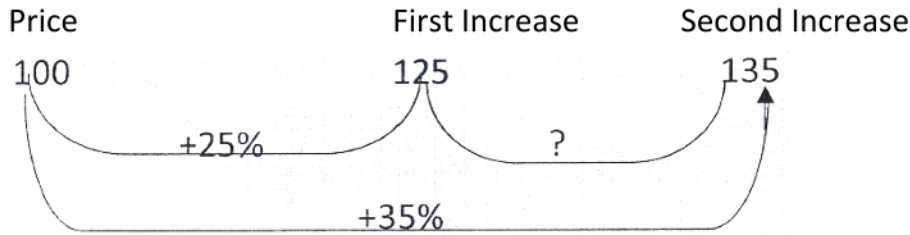
$$\Rightarrow 40 = 5y$$

$$\Rightarrow y = 8$$

Hence, the second time increase is 8%.

Method II

Let the price of laptop = 100



$$\begin{aligned} \text{Percent increase} &= \frac{135 - 125}{125} \times 100 \\ &= \frac{10}{125} \times 100 = 8\% \end{aligned}$$

Ex.3 The value of a tool decreases by 20% every year. What will be the cost of that tool after 3 years?

- (a) 48.8% (b) 51.2% (c) 54% (d) 60%

Sol. (a)

$$20\% = \frac{1}{5}$$

Initial	Final
5	4
5	4
5	4
125	64

$$\text{Required Percentage} = \frac{61}{125} \times 100 = 48.8\%$$

Method II

Let the price of tool = x

According to question,

$$\begin{aligned} \text{Price after 3 years} &= x \times \frac{80}{100} \times \frac{80}{100} \times \frac{80}{100} \\ &= \frac{64}{125} x \end{aligned}$$

$$\text{Decrease in price} = x - \frac{64}{125} x = \frac{61}{125} x$$

$$\text{Percentage decrease} = \frac{\frac{61}{125} x}{x} \times 100 = 48.8\%$$

Formula Related to Population

- If the population of a city is P and it is increasing at the rate of $x\%$ per annum, then the population after n years –

$$= P \left(1 + \frac{x}{100} \right)^n$$

- If it is decreasing, then the population = $P \left(1 - \frac{x}{100} \right)^n$

Ex.1 If the population of a city is increasing at the rate of 4% per annum and the present number of people is 15625, then what will be the population after 3 years?

Sol. Required Population = $15625 \left(1 + \frac{4}{100} \right)^3$

$$= 15625 \times \frac{26}{25} \times \frac{26}{25} \times \frac{26}{25} = 17576$$

Ex.2 The population of a city is 8000. If the number of males increases at the rate of 6 percent and the rate of increase in the number of females is 10 percent, then the population will become 8600. Find the number of females in the city.

Sol. Let the number of females = x

Then, 110% of x + 106% of $(8000 + x)$ = 8600

$$\frac{110x}{100} + \frac{106(8000 + x)}{100} = 8600$$

$$x(110 - 106) = 8600 \times 100 - 8000 \times 106$$

$$\therefore x = \frac{8600 \times 100 - 8000 \times 106}{110 - 106} = \frac{12000}{4} = 3000$$

Ex.3 In 1988 the population of a city decreased by 12%. In 1989 it increased by 15%. What was the overall impact on the city's population in the early 1990s?

Sol. % Impact = % Increase – % Decrease – $\frac{(\% \text{ Increase})(\% \text{ Decrease})}{100}$

$$= 15 - 12 - \frac{15 \times 12}{100} = 15 - 13.8 = 1.2$$

\therefore The population increased by 1.2%.

- If x percent of any amount is taken by the first person, y percent of the balance is taken by the second person and after taking z percent of the remaining amount by the third person, if A is left, then the total amount initially –

$$= \frac{A \times 100 \times 100 \times 100}{(100 - x)(100 - y)(100 - z)}$$

- An increase or decrease in the price of a commodity, a decrease or increase in its consumption –

(a) % Increase in consumption = $\frac{100 \times \text{decrease}}{100 - \text{decrease}}$

(b) % Decrease in consumption = $\frac{100 \times \text{increase}}{100 + \text{increase}}$

Ex.1 If the price of sugar is increased by 40%, by what percent should a family reduce its annual consumption of sugar so that the expenditure of the family does not increase?

- (a) $24\frac{4}{7}\%$ (b) $28\frac{4}{7}\%$ (c) $29\frac{4}{7}\%$ (d) $30\frac{4}{7}\%$

Sol. (b)

Let, the consumption initially was = 100 units and price per unit = ₹100.

Initially total expenditure = ₹ (100 × 100) = ₹ 10000

New price = 140 per units and let the new consumption = $\frac{3}{4}$ (100 - X) units.

Now, expenditure = 140 × (100 - x) = (14000 - 140x)

$$14000 - 140x = 10000$$

$$\Rightarrow 140x = 4000$$

$$\Rightarrow x = \frac{4000}{140} = \frac{200}{7}\% = 28\frac{4}{7}\%$$

$$\text{Decrease in consumption} = 28\frac{4}{7}\%$$

Method II

$$\text{Decrease in consumption \% Decrease} = \frac{100 \times \text{Increase}}{100 + \text{Increase}}$$

$$\begin{aligned} \% \text{ Decrease} &= \frac{100 \times 40}{100 + 40} \\ &= \frac{4000}{140} = \frac{200}{7} \\ &= 28\frac{4}{7}\% \end{aligned}$$

Ex.2 A 10% reduction in the price of sugar allows a housewife to buy 6.2 kg more sugar for ₹ 1116. What is the reduced price of sugar per kg?

- (a) ₹ 12 (b) ₹ 14 (c) ₹ 16 (d) ₹ 18

Sol. (d)

Let the price initially = X per kg.

$$\text{New price} = \frac{90x}{100} \text{ Rs./kg.} = \frac{9x}{10} = \text{Per kg.}$$

$$\frac{116}{(9x/10)} - \frac{1116}{x} = 6.2$$

$$\Rightarrow \frac{1240}{x} - \frac{1116}{x} = 6.2$$

$$6.2x = (1240 - 1116) = 124$$

$$\Rightarrow x = \frac{124}{6.2} = \frac{1240}{62} = 20$$

$$\text{Reduced price} = \left(\frac{90}{100} \times 20 \right) \text{ per kg.} = ₹ 18 \text{ per kg.}$$

Method II

For the current price –

Rs. \times % change = Weight (Less/More)

$$1116 \times \frac{10}{100} = 6.2$$

$$\Rightarrow \frac{1162}{62} = 18 ₹ \Rightarrow \text{Current price.}$$

Ex.3 If the price of petrol is reduced by 10%, by how much will a consumer have to increase the consumption of petrol so that his expenditure on petrol does not decrease?

- (a) $11\frac{1}{9}\%$ (b) $12\frac{1}{3}\%$ (c) $10\frac{1}{2}\%$ (d) 14%

Sol. (a)

Let the initial consumption of petrol = 100 Units and it's price = ₹100 per unit.

Total price = ₹ (100 \times 100) = ₹ 10000

New price = ₹90 per unit.

Let, new consumption = (100 + X) units.

Now, the total price = (₹100 + x) \times 90] = ₹ (9000 + 90x)

$$\therefore 9000 + 90x = 10000 = 90x = 1000$$

$$\Rightarrow x = \frac{1000}{90} = \frac{100}{9} = 11\frac{1}{9}$$

$$\text{Increase in consumption} = 11\frac{1}{9}\%$$

Method II

$$\text{Increase in consumption} = \frac{100 \times \text{Decrease}}{100 - \text{Decrease}}$$

$$\% \text{ Increase} = \frac{100 \times 10}{100 - 10}$$

$$= \frac{1000}{90} = \frac{100}{9}$$

$$= 11\frac{1}{9}\%$$

- If each side or vertices of an equilateral triangle, each side or diagonal or perimeter of a square, the radius, diameter or circumference of a circle, each side of a cube or a cuboid, the radius or diameter of a sphere or a hemisphere, etc., increase or decrease by x percent then the percentage decrease or increase in it's area is –

$$= 2x \pm \frac{x^2}{100} \quad \left[\begin{array}{l} +\text{Increase} \\ -\text{Decrease} \end{array} \right]$$

Ex.1 When the radius is increased by 25%, then find the percentage increase in the area of the circle.

- (a) 50% (b) 56.25% (c) 56% (d) 56.15%

Sol. Gradual increase = $A + B + (AB/100)$
 $= 25 + 25 + (25 \times 25/100)$
 $= 50 + 6.25 = 56.25\%$

\therefore % increase in the area = 56.25%

Ex.2 By what percent will the surface area of a cube increase when each of it's time is doubled?

- (a) 200% (b) 300% (c) 150% (d) 50%

Sol. (b)

We know that -

Total surface area of the cube = $6a^2$

If both the sides are multiplied, then –

$$1 \rightarrow 2$$

$$1 \rightarrow 2$$

Total surface area $\rightarrow \frac{1}{3}$ 4 \leftarrow New surface area

\therefore The surface area of the cube will increase = $\left(\frac{3}{1} \times 100\% \right) = 300\%$

Ex.3 If the radius and height of the base of a right circular cylinder are increased by 20% each, then by how much will the volume of the cylinder increase?

- (a) 40% (b) 60% (c) 72.80% (d) 96%

Sol. (c)

Let the radius and height of the cylinder be r and h respectively.

It's volume, $v = \pi r^2 h$

$$\text{New radius} = r + \frac{20}{100}r = \frac{6}{5}r$$

$$\text{New height} = h + \frac{20}{100}h = \frac{6}{5}h$$

$$\text{So, new volume } V_1 = \pi \left(\frac{6}{5}r\right)^2 \times \left(\frac{6}{5}h\right) = \frac{216}{125} \pi r^2 h$$

$$\text{Hence, increase in volume} = \frac{216}{125} \pi r^2 h - \pi r^2 h = \frac{91}{125} \pi r^2 h$$

$$\begin{aligned} \text{Hence, \% increase} &= \frac{\frac{91}{125} \pi r^2 h}{\pi r^2 h} \times 100 = \frac{91}{125} \times 100 \\ &= \frac{364}{5} = 72.8 \end{aligned}$$

Method II

$$\begin{aligned} \text{Volume of cylinder} &= \pi r^2 h \\ &= \pi \cdot r \cdot r h \end{aligned}$$

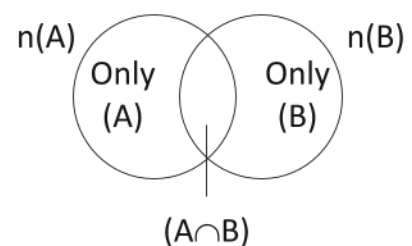
Here we will use permutation formula twice

$$\begin{aligned} \text{First time} &= 20 + 20 + \frac{20 \times 20}{100} \\ &= 44\% \end{aligned}$$

$$\text{Second time} = 44 + 20 + \frac{44 \times 20}{100} = 64 + 8.8 = 72.8\%$$

Question Based On Sets

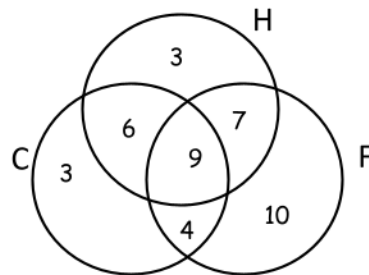
- $n(A \cup B)$ = A and B together or at least one.
- $n(A \cap B)$ = Includes both.
- $n(A \cup B) = n(A) + n(B) - n(A \cap B)$
- Only A = $n(A) - n(A \cap B)$
- Only B = $n(B) - n(A \cap B)$



Ex.1 In a school there are 22 boys in cricket team, 25 in hockey team and 30 in football team. Now if 15 boys play hockey and cricket, 16 boys play hockey and football, 13 boys play football and cricket and 9 boys play hockey, football and cricket, then find the total number of boys who play?

Sol. Let C, H and F be the set of boys playing Cricket, Hockey and Football respectively.
Given that = $n(C) = 22$, $n(H) = 25$, $n(F) = 30$, $n(C \cap H \cap F) = 9$

$$n(C \cap H) = 15, n(H \cap F) = 16, n(C \cap F) = 13$$



$$\begin{aligned} \text{Now, the number of players playing only C and H} &= n(C \cap H) - n(C \cap H \cap F) \\ &= 15 - 9 = 6 \end{aligned}$$

$$\text{Number of players playing only H and F} = n(H \cap F) - n(C \cap H \cap F)$$

$$\begin{aligned} \text{Number of players playing only C and F} &= n(C \cap F) - n(C \cap H \cap F) \\ &= 13 - 9 = 4 \end{aligned}$$

$$\text{Number of players playing only C} = 22 - 6 - 9 - 4 = 3$$

$$\text{Number of players playing only H} = 25 - 6 - 9 - 4 = 6$$

$$\text{And, number of players playing only F} = 30 - 7 - 9 - 4 = 10$$

$$\text{Hence, the total number of players} = 3 + 6 + 3 + 9 + 7 + 10 + 4 = 42$$

Ex.2 In an office 72% of employees like to drink tea and 44% like to drink coffee. If each employee must like one of the two and 40 like both, then what is the total number of employees in the office?

- (a) 200 (b) 240 (c) 250 (d) 320

Sol. (c)

Let, the total number of employees = x

$$\text{Now, } n(A) = \left(\frac{72}{100} \times x \right) = \frac{18x}{25}, n(B) = \left(\frac{44}{100} \times x \right) = \frac{11x}{25}$$

$$\text{And, } n(A \cap B) = 40$$

$$\therefore n(A \cup B) = n(A) + n(B) - n(A \cap B)$$

$$x = \left(\frac{18x}{25} + \frac{11x}{25} - 40 \right) \Rightarrow \left(\frac{29x}{25} - x \right) = 40$$

$$4x = (40 \times 25) \Rightarrow x = 250$$

Hence, the total number of employees in the office = 250

Method II

Tea = 72%

Coffee = 44%

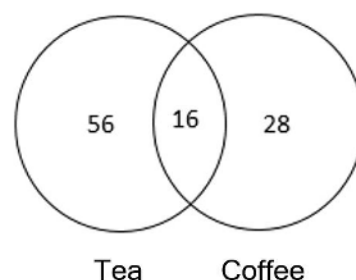
$$\text{Both (Tea + Coffee)} = 72 + 44 + 100$$

$$= 116 - 100$$

$$= 16\%$$

$$\text{Total employees} = \frac{40}{16} \times 100$$

$$= 250$$



Ex.3 In an examination 34% of the students failed in Mathematics and 41% failed in English. If 20% of the students failed in both the subjects, then what is the percentage of students passed in both the subjects?

- (a) 44% (b) 50% (c) 54% (d) 56%

Sol. (a)

Let A = set of failed students of Mathematics and B = set of failed students of English

Then, $n(A) = 34$, $n(B) = 42$, $n(A \cap B) = 20$

$$\therefore n(A \cup B) = n(A) + n(B) - n(A \cap B)$$

$$= (34 + 42 - 20) = 56$$

Hence, the number of people who failed in one or both the subjects = 56

Percentage of students who passed = $(100 - 56)\% = 44\%$



Profit and Loss

- **Cost Price** – Purchase price of an item.
- **Selling Price** – The item sold for the rupees.
- **MRP** – The MRP of an item is called the marked price or printed price or list price.
- **Discount** – Always given on the retail price of an item. The MRP of an item is always 100% in

The case of discount i.e., (SP = MRP)

- There is profit if, S.P. > C. P.
Profit = Selling Price – Cost Price (Profit = SP – CP)
- There is loss if, S.P. < C.P.
Loss = Cost Price – Selling Price (Loss = CP – SP)

$$\text{Profit \%} = \frac{\text{Profit}}{\text{Cost Price}} \times 100$$

- The profit and loss is always find out at the cost price.

$$\text{Loss \%} = \frac{\text{Loss}}{\text{Cost Price}} \times 100$$

$$\text{Selling Price} = \frac{100 - \text{Profit \%}}{100} \times \text{Cost Price (CP)}$$

$$\text{Selling Price} = \frac{100 - \text{Loss \%}}{100} \times \text{Cost Price (CP)}$$

$$\text{Cost Price} = \frac{100}{100 - \text{Profit \%}} \times \text{Selling Price (SP)}$$

$$\text{Cost Price} = \frac{100}{100 - \text{Loss \%}} \times \text{Selling Price (SP)}$$

- If the cost price or selling price is given as the number of items, then the cost price of x item is equal to the selling price of y item.

Selling price = x, Cost price = y

$$\% \text{ profit or loss} = \frac{(x - y) \times 100}{y} \quad \begin{array}{l} + = \% \text{ Profit} \\ - = \% \text{ Loss} \end{array}$$

- If the rate of buying of the item is given, then the rate of selling is given –

If an article is purchased at the rate of a for rupees n, then the $CP = \frac{n}{a}$

$$SP = \frac{n}{a} \left(\frac{100 \pm r}{100} \right) \quad \begin{array}{l} \text{Numerator – Rupees} \\ \text{Denominator – Articles} \end{array}$$

- Finding Buyer Price if Seller Price is given.

$$CP = \frac{n}{a} \times \left(\frac{100}{100 \pm r} \right)$$

When profit and loss both are equal then the cost price –

$$\text{Cost Price (CP)} = \frac{\text{Sum of the selling price}}{2}$$

Ex.1 By selling an article for Rs. 1040, the profit earned by a seller is as much as the loss when it is sold for Rs. 928, then what is the cost price of the article?

Sol: Cost price = $\frac{1040 + 928}{2} \Rightarrow \frac{1968}{2} = \text{Rs. } 984$

If there is % profit or loss is given on the selling price.

There is a profit of x% on the selling price.

Selling price = 100, Profit = x, CP = 100 – x

$$\text{Real \% profit} = \frac{x \times 100}{100 - x}$$

If there is a loss of x% on the selling price then the loss percentage = $\frac{x \times 100}{100 + x}$

Ex.2 A seller professes to sell two watches of the same price at 20% profit but takes profit on the selling price of one. If the difference between the selling price of both the watches is Rs. 48 then what is the cost price of each watch?

Sol: % profit of the first = $\frac{20 \times 100}{80} = 25\%$

According to question, 25% – 20% = 48 \Rightarrow 5% = 48

$$100\% = \frac{48}{5} \times 100 = \text{Rs. } 960$$

- If two articles are sold at x% profit and x% loss and their selling price becomes same then there will always be a loss.

$$\Rightarrow \% \text{ Loss} = \frac{x^2}{100}$$

- When a dishonest shopkeeper uses false weights – If a dishonest shopkeeper sells his goods at cost price but uses lesser weight instead of correct weight, then his profit percentage.

$$\% \text{ Profit} = \frac{\text{True weight} - \text{Less weight}}{\text{Less weight}} \times 100$$

- A decrease in the quantity of a commodity increases with a fall in the price.

Present Price (Rs. % change) = Less/More Commodity/Quantity.

Examples

Q.1 Books are bought at prices between Rs. 150 to Rs. 300 and they are sold at prices between Rs. 250 and Rs. 350, then what will be the maximum profit on selling 15 books?

- (a) Can't be determined. (b) Rs. 750
(c) Rs. 4,250 (d) Rs. 3,000

Sol: (d)

The cost price of one book is in between 150 to 300 rupees.

The selling price of one book is in between 250 to 350 rupees.

For maximum profit the cost price should be minimum and selling price should be maximum.

Therefore, CP=150

SP = 350

$$\begin{aligned}\text{Profit} &= \text{SP} - \text{CP} \\ &= 350 - 150 \\ &= \text{Rs. } 200/\text{book}\end{aligned}$$

Total profit on 15 books = $200 \times 15 = \text{Rs. } 3000$

Q.2 A person buys some articles at the rate of Rs. P per dozen and sells them at the rate of (P/8) per article, what is his profit percentage?

- (a) 30% (b) 40% (c) 50% (d) 60%

Sol: (c)

Cost price of a dozen articles = P rupees.

Selling price of a dozen articles = $\left(\frac{P}{8} \times 12\right) = \frac{3P}{2}$ rupees

$$\text{Profit} = \left(\frac{3P}{2} - P\right) = \frac{P}{2} \text{ rupees}$$

$$\% \text{ Profit} = \left(\frac{P}{2} \times \frac{1}{P} \times 100\right) \% = 50\%$$

Q.3 If the selling price of an article is $1\frac{1}{3}$ of the cost price, find the profit %.

- (a) 25% (b) $33\frac{1}{3}\%$ (c) 1.33% (d) $66\frac{2}{3}\%$

Sol: (b)

Cost price of the article = x (say)

Selling price of the article = $\frac{4x}{3}$

$$\text{Profit} = \frac{4x}{3} - x = \frac{4x - 3x}{3} = \frac{x}{3}$$

$$\% \text{ Profit} = \frac{\frac{x}{3}}{x} \times 100$$

$$= \frac{100}{3} = 33\frac{1}{3}\%$$

Smart Approach

Cost Price : **Selling Price**

3 : 4

1 → Profit

Profit = $\frac{1}{3} \times 100 = 33\frac{1}{3}\%$

Q.4 Oranges were bought at the rate of 7 oranges for Rs. 3, at what rate per hundred they have to be sold to earn 33% profit ?

- (a) Rs. 56 (b) Rs. 60 (c) Rs. 58 (d) Rs. 57

Sol: (d)

According to question,

Price of 7 oranges = Rs. 3

Price of 1 orange = Rs. $\frac{3}{7}$

For 33% gain

$$SP \text{ (Selling Price)} = \frac{3}{7} \times \frac{133}{100}$$

for 100 Oranges

$$SP \text{ (Selling Price)} = \frac{3}{7} \times \frac{133}{100} \times 100$$

SP (Selling Price) = 57 rupees.

Q.5 A man bought 20 dozen eggs for Rs. 720. If he wants to earn 20% profit then find the selling price per egg ?

- (a) Rs. 3.25 (b) Rs. 3.30 (c) Rs. 3.50 (d) Rs. 3.60

Sol: (d)

According to the question –

The cost price of 20 dozens of eggs = Rs. 720

The cost price of a dozen egg = Rs. 36

Cost price of an egg = Rs. 3

The selling price of 1 egg to get 20% = CP + Profit % × CP

$$= 3 + \frac{20}{100} \times 3$$

$$= 3 + 0.6 = \text{Rs. } 3.6$$

Q.6 A sold a tape recorder to B for Rs. 4860 at a loss of 19%. B sold the tape recorder to C at a price where A gains 17%, then find the percentage profit of B.

- (a) $22\frac{2}{9}\%$ (b) $33\frac{1}{3}\%$ (c) $44\frac{4}{9}\%$ (d) $66\frac{2}{3}\%$

Sol: (c)

Cost price of the tape recorder for A

$$= \frac{7860 \times 100}{(100 - 19)} = \frac{4860 \times 100}{81}$$

$$= \text{Rs. } 6000$$

$$\therefore \text{S.P. for B} = \frac{6000 \times 117}{100}$$

$$= \text{Rs. } 7020$$

$$\therefore \text{B's gain} = 7020 - 4860$$

$$= \text{Rs. } 2160$$

\therefore Required % profit

$$= \frac{2160}{4860} \times 100 = 44\frac{4}{9}\%$$

Q.7 By selling 1 dozen ball pens a shopkeeper makes a profit equal to the selling price of 4 ball pens, then find his percentage profit ?

- (a) 50 (b) 40 (c) $33\frac{1}{3}$ (d) $31\frac{1}{4}$

Sol: (a)

Let, the selling price of one pen = Rs. 1

Thus, S.P. of 12 pens = Rs. 12

Let, the cost price of 12 pens = Rs. 12x

According to question,

$$\text{Profit} = \text{SP} - \text{CP}$$

$$\text{Profit} = 12 - 12x$$

$$4 = 12 - 12x$$

$$12x = 12 - 4$$

$$12x = 8$$

$$x = \frac{8}{12} = \frac{2}{3}$$

$$x = \frac{2}{3}$$

$$\text{Cost price of 12 pens} = 12 \times \frac{2}{3} = \text{Rs. } 8$$

Selling price of 12 pens = Rs. 12

$$\text{Profit} = \text{SP} - \text{CP}$$

$$12 - 8 = 4$$

$$\% \text{ Profit} = \frac{4}{8} \times 100 = 50\%$$

Q.8 The selling price of an article is Rs. 4290. If 34% discount is given, then what is the marked price (in Rs.)?

- (a) Rs. 6800 (b) Rs. 7200 (c) Rs. 6300 (d) Rs. 6500

Sol: (d)

Selling Price, S.P = Rs. 4290

Discount = M.P. – S.P.

% Discount = 34%

$$\frac{\text{Discount}}{\text{Marked Price}} \times 100 = 34$$

$$\frac{\text{Marked Price} - \text{Selling Price}}{\text{Marked Price}} \times 100 = 34$$

$$\frac{1 - 4290}{\text{Marked Price}} = 0.34$$

$$\frac{4290}{0.66} = \text{Rs. 6500 Ans.}$$

Q.9 A dishonest trader claimed that he sold rice at a loss of 5%, but he used wrong weights and measured the rice 20% less. Calculate his overall loss or profit % ?

- (a) 17.5% (b) 19% (c) 18.75% (d) 20%

Sol: (c)

Suppose the seller sells 1 kg of rice and the cost price of 1 kg of rice is Rs.100 then, The trader claimed that he sold rice at a loss of 5%.

$$\text{Selling price of the rice} = 100 \times \frac{95}{100} = 95 \text{ rupees.}$$

Trader used wrong weight and measured rice 20% less.

$$\text{Cost price of the rice} = 100 \times \frac{80}{100} = 80 \text{ rupees.}$$

$$\% \text{ Profit} = \frac{\text{Selling Price} - \text{Cost Price}}{\text{Cost Price}} \times 100$$

$$\% \text{ Profit} = \frac{95 - 80}{80} \times 100$$

$$\% \text{ Profit} = \frac{15}{80} \times 100$$

$$= \frac{75}{4} = 18.75\% \text{ Ans.}$$

∴ The profit earned by the trader is 18.75 %.

Smart approach

Let, the price of 1 kg rice = 100

100 5% Loss 95
(Measured 20% less) Profit = 15
80

$$\text{Profit \%} = \frac{15}{80} \times 100 = \frac{75}{4} \\ = 18.75\%$$



ToppersNotes
Unleash the topper in you